

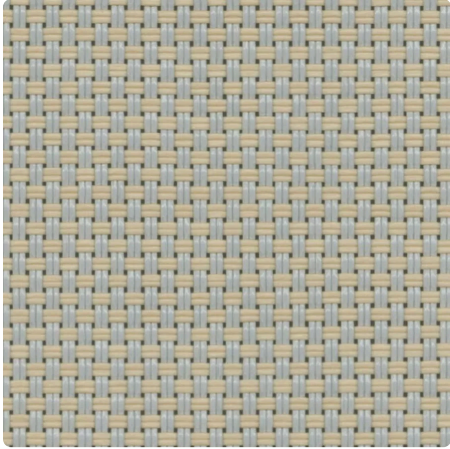
# MERMET

## BASICS

# NATTÉ PES 3

Basket weave fabric combining visual and thermal comfort

**COLOUR** 00070004 Pearl Linen



<b>WIDTH(S)</b>	250, 320 cm
<b>DENSITY</b>	6%
<b>VISUAL COMFORT - PEARL LINEN</b>	
Glare control	1
View through	2
Privacy	2
Daylight	1
<b>THERMAL COMFORT WITH GLAZING F</b>	
Class interior	1
<b>THERMAL AND VISUAL PROPERTIES</b>	
Solar Reflectance Rs	38,7%
Solar Transmittance Ts	13,2%
Interior g-tot - Glazing F	0,430
Visual Transmittance Tv	0,090
Diffuse Visual Transmittance Tv <sub>n-dif</sub>	0,030
Direct Visual Transmittance Tv <sub>n-n</sub>	0,050

# ABOUT THIS RANGE



Explore our basic solar shading fabrics - where good performance meets affordability. Achieve practicality without compromising quality. Enhance your space with cost-effective solutions tailored for reliable behaviour.

## NATTÉ PES 3

- ✓ Balancing thermal comfort and transparency
- ✓ Lightweight and easy to manage due to its featherweight design
- ✓ Uniform patterns available in 3 other densities to optimize performance, regardless of building orientation
- ✓ Cost-effective solution: budget-friendly fabric option
- ✓ 3 width sizes (up to 320cm) to reduce waste in the manufacturing of fabric panels

# TECHNICAL DATA

## GENERAL FABRIC PROPERTIES

	Average value	Standard
Weighted composition	29% Polyester - 71% PVC	
Weaving pattern	Natté 2x2	
Width(s)	250, 320 cm	
Roll length (nominal)	Rolls of 30 lm	
Surface mass (weight)	390 g/m <sup>2</sup> ± 5%	ISO 2286-2
Thickness	0.56 mm ± 5%	ISO 2286-3
Colour fastness to artificial light (scale of 8)	≥ 7/8 (white not graded)	ISO 105 B02

## MECHANICAL PROPERTIES

	Average value	Standard
Breaking strength - Warp	>160 daN/5 cm	ISO 1421
Breaking strength - Weft	>162 daN/5 cm	ISO 1421
Elongation at break - Warp	<24%	ISO 1421
Elongation at break - Weft	<24%	ISO 1421
Tear strength - Warp	≥14 daN	ISO 4674-1 method 2
Tear strength - Weft	≥12 daN	ISO 4674-1 method 2

# FIRE CERTIFICATES

		Standard
European Union - Spain	Class 1	EN 13773
France	M2	NF P 92-507
Italy	Classe Uno	UNI 9177
United States	FR	NFPA 701

# THERMAL AND VISUAL PROPERTIES

## Thermal properties

Solar Transmittance Ts (%)	13,2
Solar Reflectance Rs (%)	38,7
Solar Absorptance As (%)	48,1

## Visual properties

Direct Visual Transmittance Tv <sub>n-n</sub>	0,050
Diffuse Visual Transmittance Tv <sub>n-dif</sub>	0,030
Diffuse Hemispherical Transmittance Tv <sub>dif-h</sub>	0,070
Visual Transmittance Tv	0,090
Daylight	1
Glare control	1
Privacy	2
View through	2
UV Protection (Suv Class)	2

Thermal factors	Average value	Class
G <sub>tot</sub> Glazing F	0,430	1
G <sub>tot</sub> Glazing G	0,220	2
G <sub>tot</sub> Glazing H	0,370	1

# HEALTH, SAFETY AND OTHER PROPERTIES

5

Warranty



Reach compliant



Printable



Lead free



Fire retardant



Greenguard Gold



Oeko-Tex